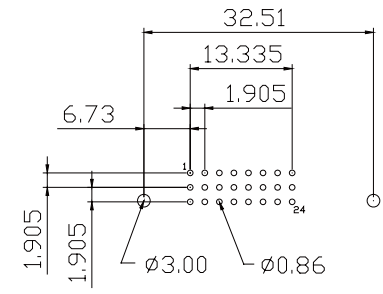
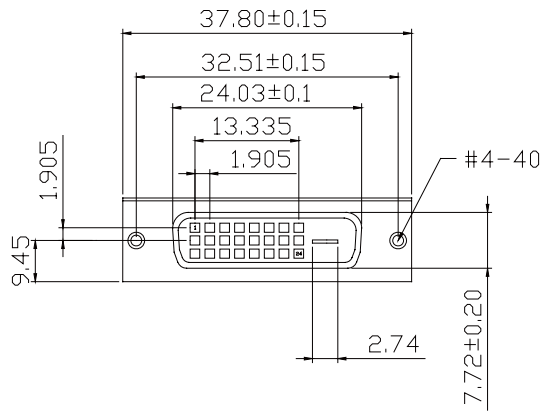
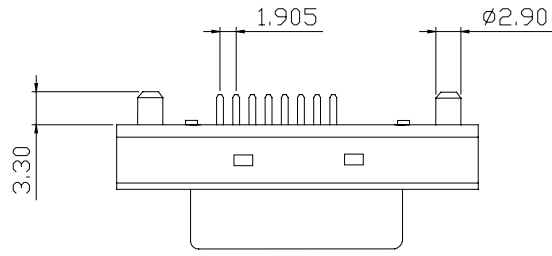


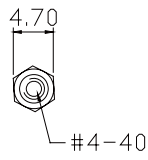
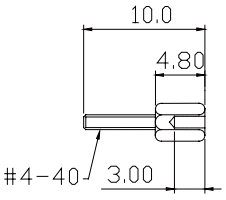
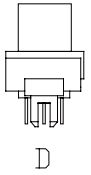
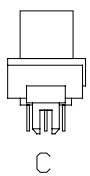
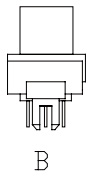
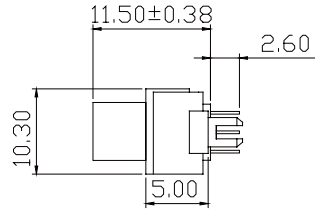
BY	CHK	REVISION RECORD MODIFICATIONS	DATE	REV.
ALLEN		RELEASE TO PRODUCTION	2007,9,10	1.0

**SPECIFICATION**  
 Current Rate: 1 AMP  
 Insulation Resistance: 2000mΩ Min  
 Contact Resistance: 20mΩ Max  
 Dielectric voltage: 500V AC for one minute  
 Operation Temperature: -55°C to +105°C

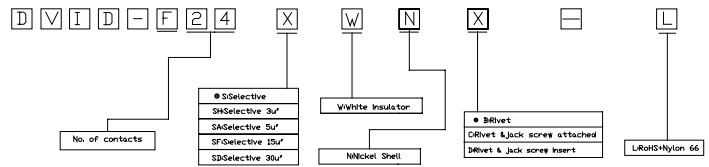
**MATERIAL**  
 Insulator: High Temperature Plastic UL-94V-0 Nature Color  
 Contact: Phosphor Bronze  
 Contact Plating: Gold on Contact Area, and Tin plated or nickel plated  
 Metal Board Lock: Copper Alloy with Tin Plating  
 Shell: Zinc Alloy with Nickel Plating



Recommended PCB Layout  
 (PCB TOLERANCE±0.05)



ORDER INFORMATION



APPRO	CHECK	DRAWN	PART NO.	DVID-F24XWNX-L		
			ITEM NO.			
			DRAW NO.			
			UNIT	mm	SCALE	no
			TOLER		NO.	

DESCRIPTION

